



On Site Medical Waste Shredder and Sterilizer

PERFORMANCE CHARACTERISTICS:

4Kw/5.5Hp Maximum Power
72 RPM Cutting Speed Rotation Cutter
Shaft Critical Length 700mm
Hopper Opening size 700mm x 500mm
Method of Loading: Hand Feed
Product Discharge Method: Auger Conveyor
Cycle Time 20 Minutes 3 Cycles Per/Hour
Shred and Sterilize Up to 150 Liters Per Cycle
Dimensions:L: 2530 mm x H: 1720 mm xW: 760 mm
Omron PLC & HMI

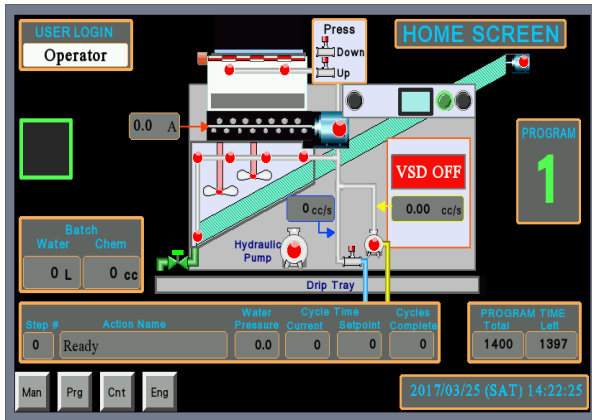


This is a product of Alytech Pty Ltd manufactured by Evashred

The Alymed is manufacture to Australian and New Zealand Standard Industrial Classification (ANZSIC)

Medical Waste Shredder and Sterilizer

ALYMED-700 TECHNICAL SPECIFICATIONS:



Control:	
PLC	Omron
HMI	Omron
Real time view	Home Page
Total Reports	All pages
Remote Reports Access	Via Internet
Remote Technical Access	Via Internet

SHREDDER NAME:	Alymed-700 Medical Waste Shredder
Number of Motors	1x 4KW (5.5 H/P) 3 Phase Power
Number of Reduction Units	1x Planetary Reduction Unit
Cutter Shaft Length	700mm
Number of Cutters	54
Shaft Diameter	220mm
Cutter Shaft Rotation Speed in RPM	72 RPM (adjustable on HMI)
Cutting Chamber Opening	700mm x 500mm
Hopper Height	1720mm
Loading Height	1300mm
Total Height	1720mm
Dimensions (L x H x W)	2530mm x 1720 mm x 760mm
Weight	800KG
Capacity/Throughput Rate in Liters/Hour	450 Liters Per Hour
Water Consumption in Liters Per Cycle	40 liters Per Cycle
Sterilizer Consumption Per Cycle in Milliliters	300mls-400ml Per Cycle (Dependent on Waste)
Electricity Consumption Per Cycle	0.35 KWH



The throughput rate is not guaranteed at any given location.

Specifications are subject to change without notice. Contact your nearest distributor/ agent for up-to-date specifications prior to purchase.